

## **I-84/SR 14 Closure Working Group LJDACT Meeting Presentation 5/1/17**

### **Purpose Statement:**

The working group will develop and implement integrated strategies to improve transportation system management and operations during incidents and special events in the I-84/SR14 corridor.

### **Background:**

The results from the debrief session of the June 2016 train derailment and the subsequent extended closure of I-84 in Mosier revealed the need to develop a traffic management plan for major incidents and events in I-84 and SR14 corridor. Representatives from ODOT and WSDOT have been partnering as the I-84/SR14 Closure Working group in the development of this corridor plan.

**Team Members:** Co-Chairs: Pat Cimmiyotti ODOT Maintenance, and Bill VanAntwerp WSDOT Maintenance, Joel McCarroll ODOT Traffic, Ted Miller ODOT Region 1, Michael McElwee Port of Hood River, Paul Koch Port of Cascade Locks, Jeff King Klickitat County EM, Justin Huffman Wasco County EM, Lane Magill, Wasco County Sheriff, Mike Niday WSDOT Maintenance, Bill Hunsaker White Salmon, Barbara Ayers Hood River County EM, and Rick Keniston WSDOT Traffic.

### **Goals:**

Develop a short term closure plan that will address immediate traffic needs and develop a long term corridor closure management plan that includes Incident Management, Traveler Information and Traffic operations.

### **Progress Update**

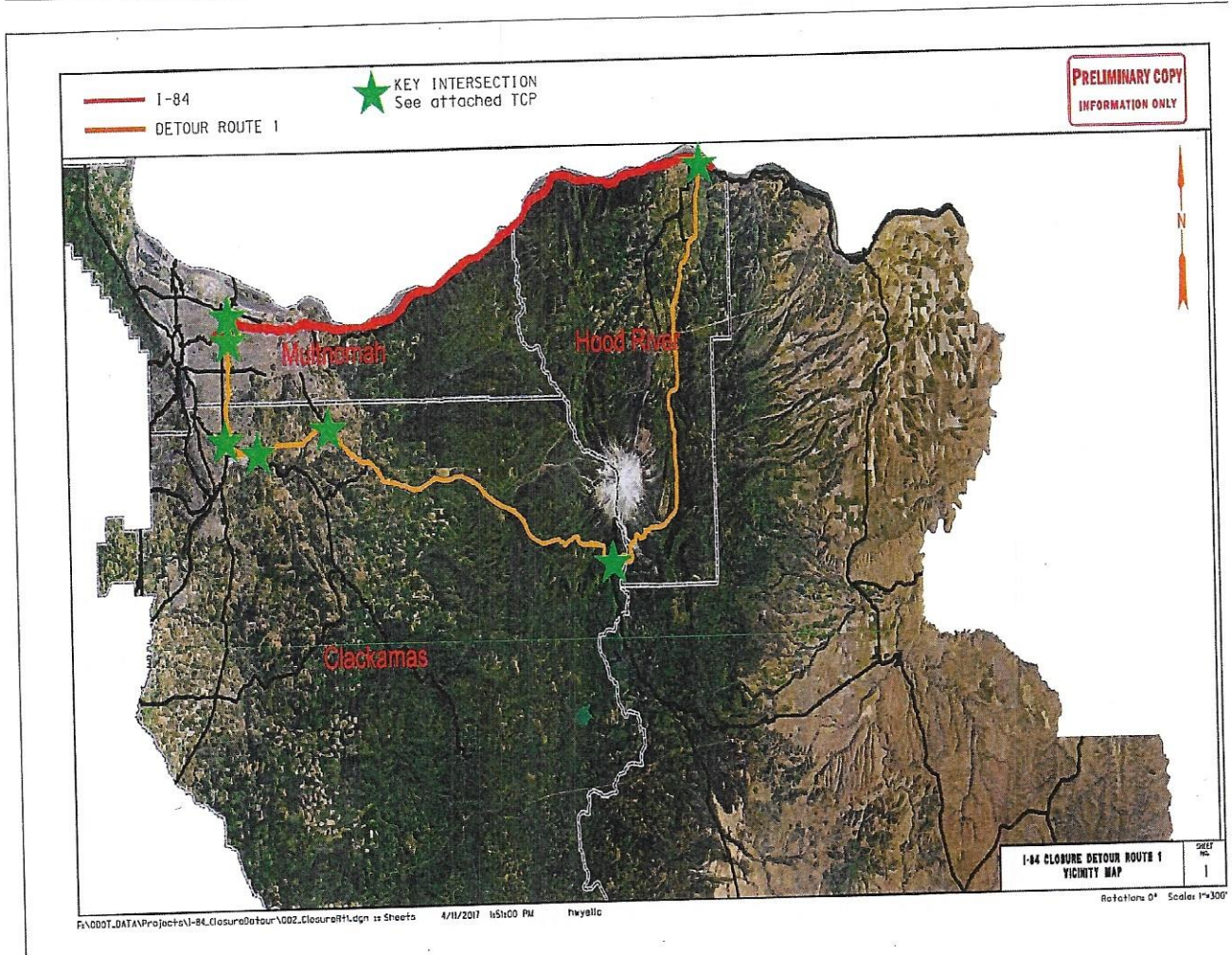
The corridor was broken into three primary segments; Portland - Hood River, Hood River - The Dalles, The Dalles - Biggs Jct. (See Attachment "A"). The segments lengths were determined by the ability to utilize the bridges crossing the Columbia River as part of the detour plans. The results of the traffic analysis determined I-84 traffic needed to be split between SR14 and the available Oregon highway detours to handle the traffic volume without significant delays during a closure on I-84. Washington SR 14 will carry the WB traffic and the Oregon highways carry the EB traffic.

### **Next Steps:**

1. Development of Traffic Control Plans for each Detour Route Segment: May - June 2017
2. Development of a Communication Plan: June - July 2017
3. Complete I-84/SR 14 Closure Plan: July 2017
4. Complete ICM: 2018

# I-84/ SR 14 Detour Segment 1 Attachment "A"

## Portland - Hood River

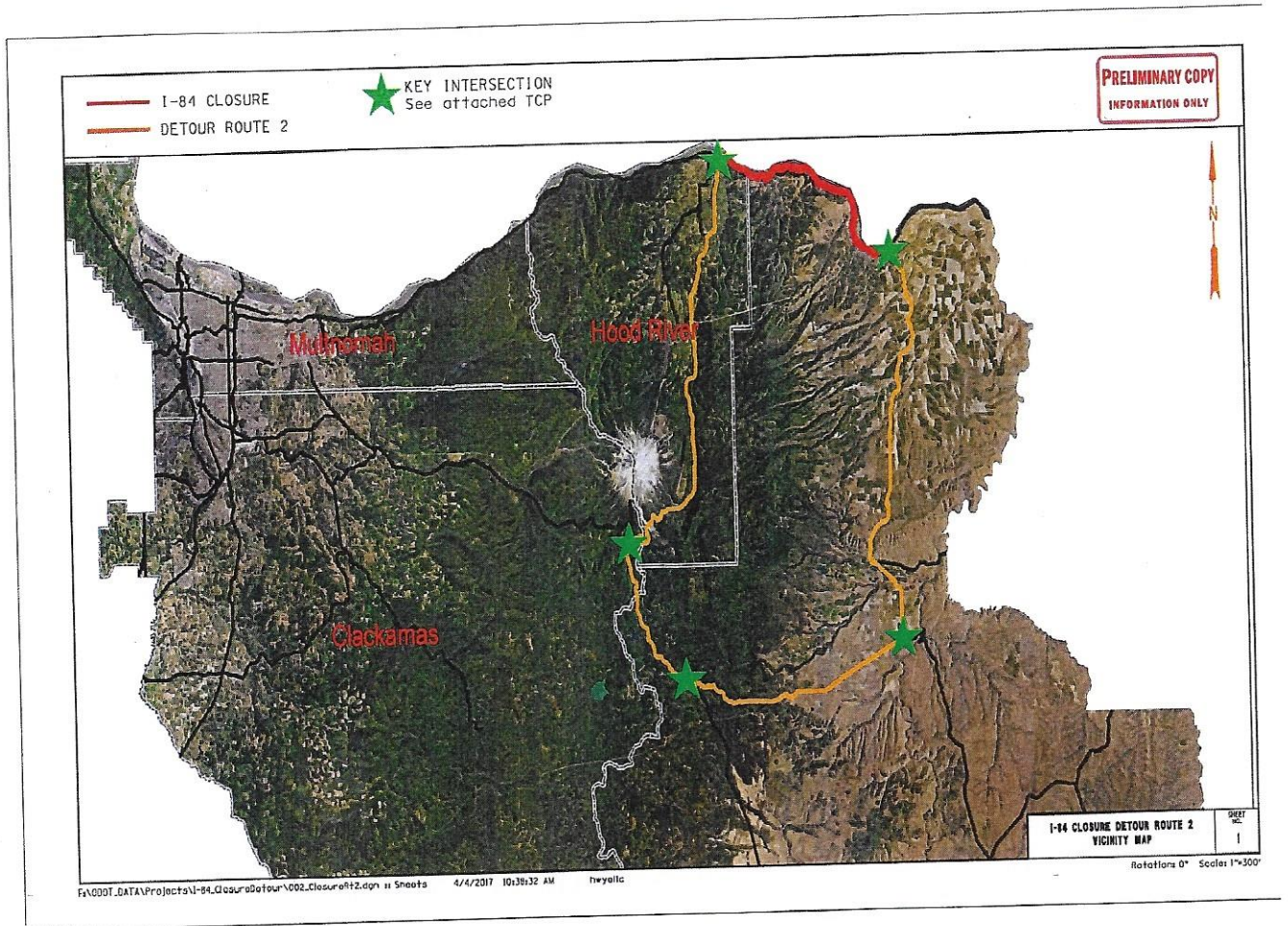


Eastbound traffic will travel east on Highway 26, north on Highway 35 and reconnect with I-84 at Exit 64 in Hood River.

Westbound traffic will be detoured at Exit 64, north across Hood River Bridge and west on Highway SR-14 to Vancouver.

## I-84/ SR 14 Detour Segment 2 Attachment "A"

### Hood River - The Dalles

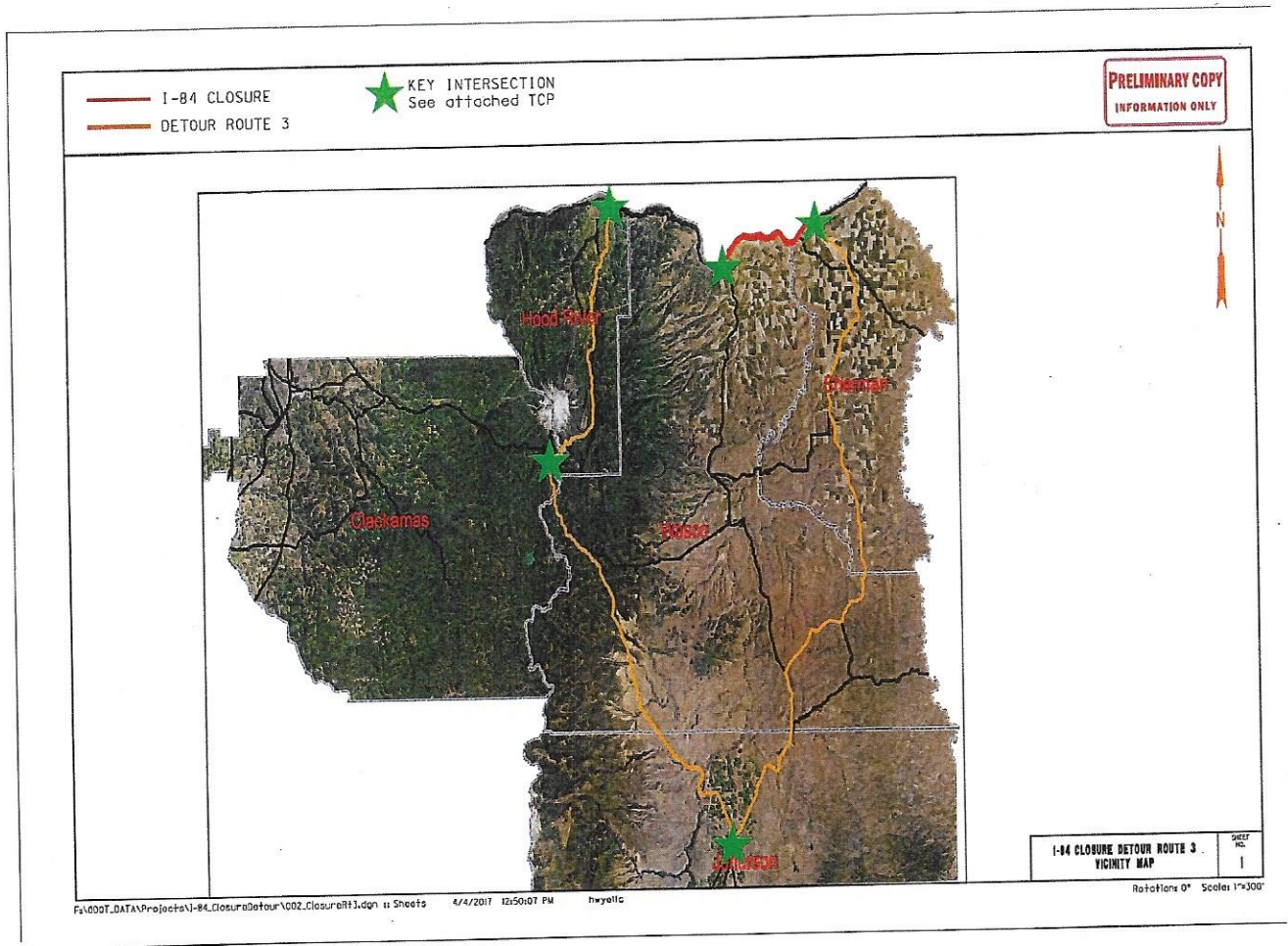


Eastbound traffic will be detoured at Exit 64 in Hood River to travel south on Highway 35, east on Highway 26, east on Highway 216 and north on Highway 197 to reconnect to I-84 at Exit 87 in The Dalles.

Westbound traffic will be detoured at Exit 87, north on Highway 197 across The Dalles Bridge, west on SR 14, north on Highway 35 across the Hood River Bridge to reconnect to I-84 at Exit 64 in Hood River.

## I-84/ SR 14 Detour Segment 3 Attachment "A"

### The Dalles - Biggs Jct.



Eastbound traffic will be detoured at Exit 87, north on Highway 197 across The Dalles Bridge, east on SR 14, south on Highway 97 across the Biggs Bridge to reconnect I-84 at Exit 104 in Biggs Jct. Alternate route is to detour at Exit 64, south on Highway 35, east on Highway 26 to Madras, north on Highway 97 to reconnect with I-84 at Exit 104 in Biggs Jct.

Westbound traffic will be detoured at Exit 104, north on Highway 97 across the Biggs Bridge, west on SR 14, north on Highway 197 across The Dalles Bridge to reconnect to I-84 at Exit 87 in The Dalles.